

THE ROTCH-JONES-DUFF HOUSE & GARDEN MUSEUM



Special Events &
WEDDINGS

2025-2026 SEASON

The Garden Wedding Experience at
The Rotch-Jones-Duff House & Garden Museum



Our history, your love story.

Discover History and Elegance at the Rotch-Jones-Duff House & Garden Museum.

Experience the legacy of William Rotch, Jr., a prominent figure in New Bedford's history. Step into the past as you explore our beautifully preserved 1834 Greek Revival house at 396 County Street.

The exterior remains true to its origins, offering a timeless atmosphere. Our lush gardens, reminiscent of the Jones residency, feature a 19th-century wooden lattice pergola, formal boxwood rose parterre garden, boxwood specimen garden, and a tranquil woodland shade garden. Amidst apple and pear trees, hydrangea, dogwoods, and heritage trees, you'll find a piece of history.



The Rotch-Jones-Duff House & Garden Museum is a 501c(3) nonprofit organization with a mission to enliven New Bedford's history, engage our communities, and enrich cultural understanding through stewardship, education, and entertainment.

What's included in YOUR WEDDING RENTAL PACKAGE?

- Enjoy exclusive use of the gardens, a charming canopy tent (available May through October), and the elegant mansion porches.
- Benefit from vendor coordination and day-of support provided by our dedicated events team.
- Accommodates a full service dinner, and bar provided by a licensed and insured catering partners.
- Relax in a private wedding suite located on the mansion's lower level.
- Treat your guests to self-guided museum tours following the ceremony.
- Access our inventory, including up to 130 sleek black vinyl chairs and ten 60" round tables, to create the perfect setup.
- Provide your vendors with ample set-up & breakdown time.
- Capture unforgettable moments with photo opportunities inside the mansion.
- Enjoy a one-year dual membership to the museum as our special gift to you.
- Ensure every runs smoothly with a one hour rehearsal prior to your special day.



Ceremony & Reception 5 hour rental

The full wedding experience.
Full access to the grounds for your special day.

	Sunday Afternoon 12-5 p.m.	Weekday 4 PM Monday-Thursday	Friday & Saturday 4 PM includes holidays
1-50 guests	\$2,500	\$2,000	\$3,500
51-100 guests	\$3,000	\$2,500	\$4,000
101-200 guests	\$3,500	\$3,000	\$4,500

"PM" Night rate starts at 4 p.m. Monday through Saturday, until 10 p.m. the latest. Sunday evenings only until 7 p.m.

Inquiry with the functions manager for "AM" rates available Monday through Saturday, 9 a.m. until 2:00 p.m.



Wedding Reception

3 hour rental

Cheers to love with dinner & dancing under the canopied patio.

	Sunday Afternoon 12-5 p.m.	Weekday 4 PM Monday-Thursday	Friday & Saturday 4 PM includes holidays
1-50 guests	\$1,500	\$1,200	\$2,100
51-100 guests	\$1,800	\$1,500	\$2,400
101-200 guests	\$2,100	\$1,800	\$2,700

Garden Ceremony

2 hour rental

Exchange your vows in the historic garden, with time for photos with your favorite people.

	Sunday Afternoon 12-5 p.m.	Weekday 4 PM Monday-Thursday	Friday & Saturday 4 PM includes holidays
1-50 guests	\$1,000	\$800	\$1,400
51-100 guests	\$1,200	\$1,000	\$1,600
101-200 guests	\$1,400	\$1,200	\$1,800

“PM” Night rate starts at 4 p.m. Monday through Saturday, until 10 p.m. the latest. Sunday evenings only until 7 p.m.

Inquiry with the functions manager for “AM” rates available Monday through Saturday, 9 a.m. until 2:00 p.m.

Private Events

Venue Fee Schedule



Photo credit: Maggie by the Millimeter

Outdoor Rental

CANOPY TENTED PATIO

HOURLY RATES

	Weekday AM Monday-Friday	Weekday PM Monday-Thursday	Friday & Saturday PM includes holidays	Sunday All Day until 8:00 p.m.
50 guests	\$175	\$350	\$650	\$450
51-100 guests	\$250	\$450	\$750	\$550
101-200 guests	\$350	\$550	\$850	\$650

Private rentals of the tented patio include exclusive access to the patio area and the main grass lawn. Set-up is restricted to these designated areas, and no additional set-up is permitted on any other part of the property without prior approval from the venue manager. Please note that this option is not part of our wedding packages. “AM” rate is 9 a.m. until 2 p.m. and “PM” rate is 4 p.m. until 10 p.m.

Host a private TEA PARTY FOR ANY OCCAISON.



FOR CURRENT TEA PARTY PRICING E-MAIL FUNCTIONS@RJDMUSEUM.ORG.

Photo credit: Maggie by the Millimeter

Indoor Rental

DOUBLE PARLORS

HOURLY RATES

	Weekday AM Monday & Tuesday	Weekday PM Monday-Thursday	Friday & Saturday PM includes holidays	Sunday All Day until 8 p.m.*
48 guest maximum	\$100	\$200	\$300	\$250

*Sundays from Memorial Day through Indigenous People’s Day are not available for private rentals
“AM” rate is 9 a.m. until 2 p.m. and “PM” rate is 4 p.m. until 10 p.m.



Photo credit: Dunnright Photo

Filming & Photography

\$175 per hour **PHOTOGRAPHY** BY APPOINTMENT ONLY

The Rotch-Jones-Duff House and Garden Museum welcomes photography both in its historic gardens and inside the museum under specific guidelines. Photoshoots can include posed or candid portraiture for personal events such as engagements, family portraits, maternity sessions, proms, graduations, Quinceañeras, weddings, and similar occasions.

Photography Session Rental:

Photographers or clients must pay an hourly rental fee to use the gardens or designated areas inside the museum for photography sessions.

Scheduling:

- Submit all requests to functions@rjdmuseum.org at least 7-10 business days before the desired date.
- Include session details such as date, time, location preferences (garden or museum), and participant names.
- Confirm and complete payment upon approval to finalize your booking.

Indoor Photography Guidelines:

Photography is permitted inside the museum with prior approval. The following restrictions apply:

- No flash photography allowed inside the museum. Exceptions are rare and must be pre-approved.
- Museum artifacts cannot be moved or used as props.
- Photography on the second level of the museum is prohibited, unless specifically approved by the Functions Manager in advance.

General Restrictions:

- Photographs may not be commercial in nature or resold for commercial purposes.
- Mini Sessions are not permitted.
- All photography must be scheduled in advance with the Functions Manager.
- Absolutely no photography is allowed without obtaining the necessary approvals and permissions. This applies to both RJD members and non-members.



Filming & Photography

\$250 per hour
FILMING

MONDAY & TUESDAY ONLY

Film Shoots and Commercial Photography

The museum's grounds and interior are available for professional projects, such as film, television, advertisements, documentaries, and digital content creation (e.g., YouTube, TikTok).

Requirements for Filming Requests:

- All requests are subject to approval.
- Approved projects must sign a contract outlining the terms and conditions for using the property.
- A fee must be paid prior to the filming date.
- To submit a request, email functions@rjdmuseum.org with project details, including proposed dates, timelines, and scope of work.

Drone Photography

Drone usage is generally not permitted on museum grounds. Exceptions are rare and must be pre-approved. Submit requests for drone photography to functions@rjdmuseum.org.

Museum's Right to Photograph Visitors

The Rotch-Jones-Duff House and Garden Museum reserves the right to photograph or film visitors on its grounds or in its museum. These images may be used for promotional purposes, including publications, marketing, and media.

If you prefer not to have your image used, contact functions@rjdmuseum.org with the relevant details. By visiting the museum or participating in its events, you agree to this policy.

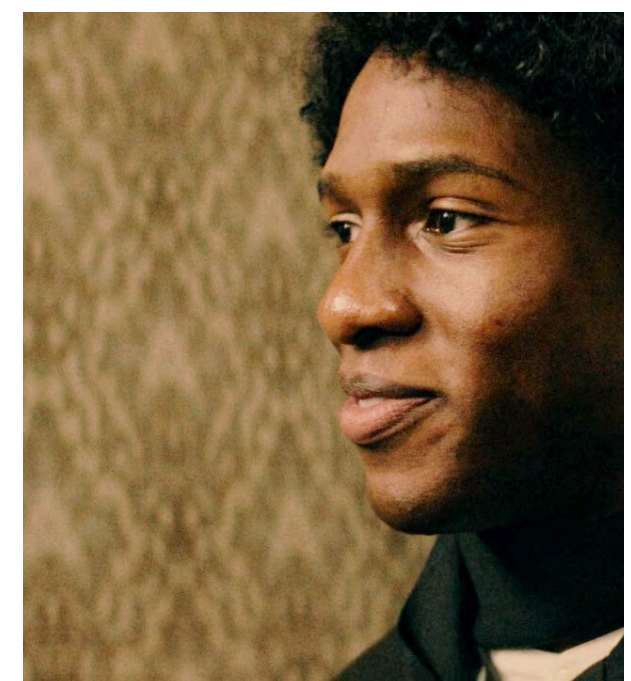


Photo credit: Scenes from a short film "Sweet Freedom" used with permission from The Shepherd Center for Performing Arts in care of Alyssa Botelho, the producer.

Special Events & Weddings

POLICY & VENUE AMENITIES

2025-2026 SEASON

Event Rental Policies & Client Information

Thank you for choosing us for your event! We are committed to assisting you with your planning needs. A successful event relies on clear communication, so please don't hesitate to contact us with any questions or plans.

Venue Description: RJD Garden & Mansion

Outdoor Venue

- Size: 1 acre with several hundred feet of open lawn and ornamental gardens.
- Backdrop: A 19th century pergola ideal for ceremonies.
- Patio: 1,600 square feet, tented from May through October.

Indoor Venue

- Building: Historic mansion built in 1834 featuring:
 - Original Mahogany and Walnut woodwork
 - New Bedford Pairpoint glass chandeliers
 - Original artwork and period furniture
 - Christmas decorations on the first floor in December

Blooming Schedule

- May: Forsythia
- June: Dogwood
- July-August: Hydrangea, Rambling Roses
- June-September: Roses

Capacity Limits

Outdoor Events

- Seating Capacity:
 - 100 seated at tables under the tent
 - 128 seated in rows under the tent or on the grass
- Fire Code Limits (additional table and chair rentals required):
 - Up to 100 for dinner/dancing
 - Up to 110 for dining only
 - Up to 170 seated in rows (tent or grass)

Indoor Events

- Seating Capacity:
 - 40 seated at tables in the parlors
 - 50 seated in rows of chairs in the parlors
 - 50 standing cocktail style on the first floor

Amenities

- Furniture:
 - Up to eight (10) 30" round tables
 - Up to five (5) 30" round high-top tables
 - Up to eight (10) 5' round tables
 - Up to four (4) 48" round tables
 - Up to four (4) 6' rectangular tables
 - Up to four (4) 8' rectangular tables
 - Up to 128 black folding chairs
- Four (4) pyramid patio heaters. Fuel charge may apply.
- Technology: 30" flat screen TV for audio/visual presentations
- Dressing Areas:
 - One guaranteed area in the main building
 - A second area in the Coach House classroom (pending approval)
- Restrooms:
 - Outdoor: Three restrooms (including one accessible)
 - Indoor: One accessible restroom on the first floor
- Parking: Street parking available (no off-street parking) with one handicap-accessible spot
- Accessibility: Full access on the patio, first floor of the mansion, and limited access in some garden areas
- Kitchen Access: Limited kitchen space in the basement; catering prep space pending approval in the Coach House classroom
- Mansion Access: Available during garden events for guest visitation for one-hour for rentals over \$3,000, one-hour mansion access is included.

Client Responsibilities

Catering:

- Food must come from a licensed caterer or restaurant.
- Caterers must be properly licensed and insured.
- Caterers are responsible for trash removal; providing their own bins. Two bins provided for events under 100 guests.
- Vendor must adhere to all the rules listed on the RJD Food & Beverage Caterer Guidelines.

Beverage Catering:

- Bartenders must be licensed and insured.
- Bartenders must manage their trash; providing their own bins.
- Vendor must adhere to all the rules listed on the RJD Food & Beverage Caterer Guidelines.

Special Events & Weddings
POLICY & VENUE AMENITIES
2025-2026 SEASON

(continued from previous page)

Insurance:

- Proof of general liability insurance is required.
- Proof of liquor liability insurance is required (if not using licensed bartenders).

Event Planning & Arrangements:

- Provide all vendor information, seating charts, decoration plans, dance floor arrangements, wedding party procession list, and sound systems.
- Coordinate vendor arrangements and deliveries with RJD Functions Staff.
- All items not listed as provided by the venue are the client's responsibility.

Mansion Venue Policies / Indoor Space

- Event Schedule:
 - Events must start after 8:00 AM and end by 10:00 PM.
 - One-hour setup time included; cleanup time is also one hour post-event.
- Storage: Similar storage restrictions as the garden venue.
- Equipment Restrictions:
 - Keep DJ/band equipment to a minimum due to limited indoor space.
 - Only white wine and light-colored beverages allowed.
- Museum Objects: Guests and vendors must not touch or sit on museum furniture. Only RJD staff may move items within the museum.
- Food and Drink: Allowed only on the first floor; no red beverages.
- Prohibited Items:
 - Most decorations due to wall restrictions.
 - Incendiary devices (fireworks, candles).
 - Smoking and pets (with exceptions).
- Allowed Items:
 - Floral arrangements, pets involved in the ceremony, service animals.

For any additional questions or specific details regarding your event, please contact RJD Functions Staff. We are here to help make your event a success!

Garden Venue Policies / Outdoor Space

- Fire Code/Capacity:
 - 150 for cocktail settings (standing)
 - 110 for dining with tables and chairs
 - 100 for dining and dancing
- Seating:
 - Up to 200 guests may be seated on the lawn (additional tent and chair rental is the client's responsibility).
 - Rain accommodation for ceremony only rentals to be held under our tented patio.
 - No rain accommodation is available for wedding events that have both the ceremony and reception.
- Rental Fees: Range from \$500 to \$4,200 based on guest count, event duration, day of the week, and time of day.
 - One-hour setup time included for 2-hour rentals; two hours for 3-hour rentals or more.
 - One hour for cleanup post-event; additional time may incur extra charges.
- Sound Restrictions: Bands and DJs must not start before 11 AM and must finish by 10 PM. Events must start after 9:00 AM and end no later than 10:00 PM.
- Storage: No items may be stored on-site except rental deliveries.
- Prohibited Items:
 - Staking to the ground or tying to trees.
 - Scattering rose petals or organic materials.
 - Incendiary devices (fireworks, candles, smoke bombs).
 - Wet paint, painting, spray paint on patio, and/or near the house.
 - Glitter, confetti, or items that cannot be easily removed.
 - Pets (except for service animals).
 - No butterfly, or bird releases.
 - Popping balloons on site.
- Allowed Items:
 - Bubbles, well-anchored helium balloons, floral arrangements.
 - Pets involved in the ceremony.

additional rental charges:

40" Flat Screen TV/ HDMI Input	\$100
Wired Microphone & Speaker	\$150
1 hr Docent Guided Tour	\$150 per docent / hour
1 hr Rosarian Guided Tour	\$150 per hour
Fuel Charge Patio Heaters	\$30 each, up to four available.

southcoast, ma & ri
VENDOR
DIRECTORY
2025-2026 SEASON



Vendor Directory

Catering- Cakes

Artisan Bake Shop
(508) 763-4905
artisanbakeshop.com

Sugarttarius Bake Shoppe
(508) 264-1605
IG @Sugattarius

Catering- Food

D&D Catering
(508) 997-8229
DandDCaterers.com

Lilly's Tea Room | Tea Catering
(928) 208-0287
therescuecafe@gmail.com

On The Go Catering
(508) 758-9922
OntheGoTakeout.com

Russell Morin Catering & Events
(508) 226-6600
Morins.com

Smoke & Pickles Catering Co.
sally@smokeandpickles.com
SmokeandPickles.com



Catering- Food Trucks

Anzio's Brick Oven Pizza
(508) 466-8227
anziosbrickovenpizza.com

Ellie's Sweet Treats
(781) 534-9805
elliestreats.com

Friskie Fries
(401) 228-2660
friskiefries.com

Traveler's Ale House
(774) 510-5103
travelersalehouse.com

Catering- Spirits

OCD Beverage Catering
(774) 473-7286

The Wandering Pour
(508) 496-9712
TheWanderingPour.com

Event Planner

Events by Amy Melody
(774) 360-0753
EventsbyAmyMelody.com

Events by Angel
(774) 328-9839
EventsbyAngel.com

Una Weddings | Courtney Rezendes
UnaWeddings.com
IG: @unaweddings

Florist

Between the Roses Florist
(774) 213-5223
betweentherosesflorist.com

The Dirt Empress
(401) 203-5654
thedirtempress.com

Florist (cont.)



Halcyon Heroine
@halcyonheroine
halcyonheroine.com

Touch of Grace
(508) 858-5270
touchofgraceflorist.com

Hospitality

60 Mechanics (Cobblestone) Lane
(310) 691-3498
masterofVR@gmail.com

New Bedford Harbor Hotel
(508) 999-1292
newbedfordharborhotels.com

New Bedford Mills
(508) 840-0382
newbedfordmills.com

The Whale House
(617) 320-3953
thewhalehousenb.com

Fairfield Inn & Suites
(774) 634-2000

This vendor directory is being provided as a convenience and for informational purposes only.
They do not constitute an endorsement or an approval by the Rotch-Jones-Duff House & Garden Museum.

Vendor Directory



The Look

Aldo's House of Formals | Suits
401-946-2889, by appointment only
aldoshouseofformals.com

All The Glam | Hair & Make-up
(508) 488-7838
alltheglambridal.com

Brushed by Syd | Make-up Artist
(401) 215-7651
brushedbysyd.com

Ve'Lace Bridal | Bridal Dresses
(508) 966-0091, by appointment only
velacebridal.com

Music & Entertainment

Brianna Viera | Voice, Violin, & Cello
(508) 525-5933
likethecheeze321@aol.com

B Sharp Entertainment | DJ & Pianist
(508) 822-4545
southcoastdj.com

Music of Our Lives | DJ & Vocals
(508) 858-8231
JordanPaiva.com

New Bedford Symphony Orchestra
(508) 994-2900
nbsymphony.org

Wicked Weezy Entertainment
(508) 525-5933
likethecheeze321@aol.com

Officiants

Rayana Grace
Justice of the Peace, MA
(508) 717-5774
rayanagracejp@gmail.com

Steve Martins
Justice of the Peace, MA & RI
(774) 930-9823
bristolcountyjp.com

Photo & Video

Allison Barrett Photography
(860) 707-5518
allisonbarrettphotography.com

Earth & Sun Co. | Videographer
(401) 954-1652
earthandsun.co

KNWN Ent. | Photo & Video
@KNWNEnt
knwnent.com/weddings

Maggie by the Millimeter
IG: @maggiebythemillimeter
maggiebythemillimeter.com

Miranda Photo Co.
IG: @mirandaphotoco
mirandaphotoco.com

Photo Dunn Right
IG: @photodunnright
photodunnright@gmail.com

Shelynne Marie Photography
(508) 951-2572
shelynnemariephotography.com

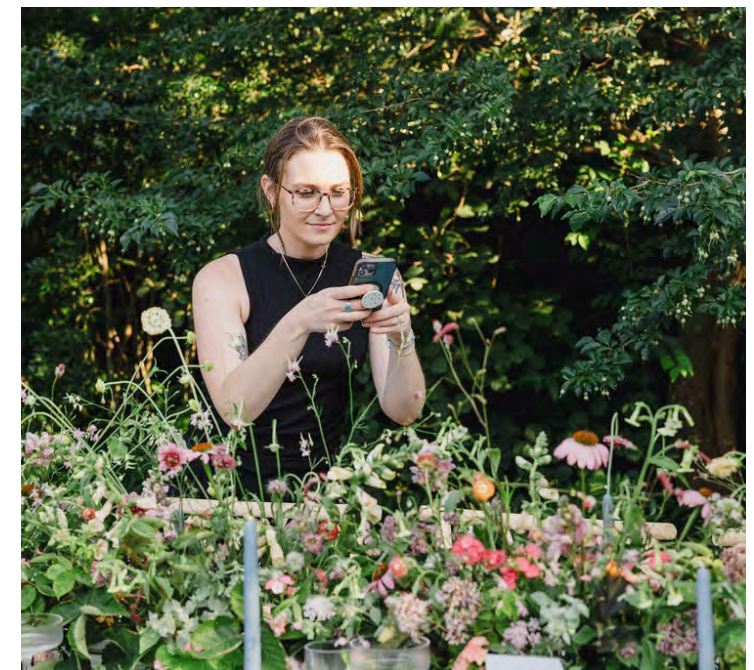


Signs, Stationary, & Social

Brown Suga Stationary
(774) 305-1764
IG: @BrownSugaStationary

Styles by Shannen | Signage
IG: @StylesbyShennen
etsy.com/shop/stylesbyshannen

Vow & Forever Co. | Content Creator
IG: @VowandForeverWeddingCo
vowandforeverweddingco.com



Tents & Event Rentals

Chase Canopy
(508) 758-2055
chasecanopy.com

PEAK Event Services
(833) 888-PEAK
peakeventservices.com

Pranzi Catering & Events
(401) 383-3631
pranzi.com

Sperry Tents | Seacoast
(603) 570-4857
sperrytentsseacoast.com

Transportation

Flying Lady Chauffeur | Classic Car Rental
(774) 377-5811
flyingladychauffeur.com

This vendor directory is being provided as a convenience and for informational purposes only; they do not constitute an endorsement or an approval by the Rotch-Jones-Duff House & Garden Museum.

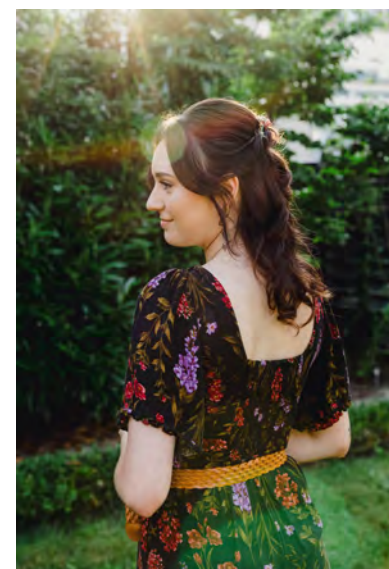


photo credits

STYLED SHOOT 24'

THANK YOU TO ALL THE AMAZING VENDORS & MODELS WHO CONTRIBUTED.

Aldo's House of Formals

Groom's Suit
@Aldos_Formals

All The Glam

Hair Styling
@AllTheGlam

Allison Barrett Photography

Photographer
@Allison_B_Photo

Artisan Bake Shop

Cake & Pastries
@ArtisanBakeshop

Brown Suga Stationery

Stationary
@BrownSugaStationery

Brushed by Syd

Make-Up Artist
@SydTess

Earth & Sun Co.

Videographer
@EarthAndSunCo_

Halcyon Heroine

Florist
@HalcyonHeroine

Peak Event Services

Event Rentals & Tents
@PeakEventServices

Styles by Shannen

Signage
@StylesByShannen

Smoke & Pickles

Food Catering
@SmokeAndPickles

Una Weddings

Event Coordinator
@UnaWeddings

Ve'Lace Bridal

Bridal Gown
@VeLaceBridal

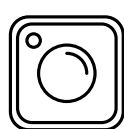
Vow & Forever Co.

Content Creator
@VowAndForeverWeddingCo

The Wandering Pour

Bar Services
@TheWanderingPour





[@RJDMansionVenue](#)



[RJDMuseum.org](#)



Functions@RJDMuseum.org